

Product Data Sheet

100mm 55 9170

1mg/ml pH 7 1-2mg/ml 0.006mol/L

4-25°C 3

2

1mg/ml pH 7 1-2mg/ml 0.006mol/L 0.06X 0.1mol/L NaOH

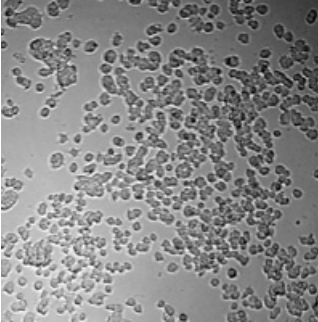
(): 10xPBS(10 mg/L pH) 10x , 0.1mol/L NaOH, 0.1mol/L (),

A 1mg/ml 200ul (5mg/ml) 690ul H2O 12ul 0.1mol/L NaOH 12ul 0.1mol/L NaOH NaOH 100ul 10xPBS 10x (pH 7 PBS pH) (25) 20 10xPBS

B 1mg/ml 200ul (5mg/ml) 12ul 0.1mol/L NaOH 12ul 0.1mol/L NaOH NaOH 23ul 10xPBS 10x (pH 7 PBS pH) 760ul 20

pH

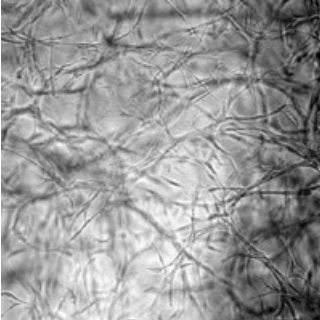
Background



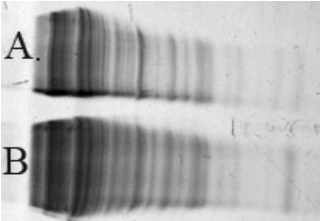
Caution: Product has not been fully validated for medical applications. For research use only. Tel: (909) 407-4943 Fax: (626) 353-8530 E-mail: tech@glpbio.com Address: 10292 Central Ave. #205, Montclair, CA, USA

Product Data Sheet

XXXXXXXXXX
XXXXXXXXXX PC-12 XX



XXXXXXXXXX
XXXX NIH-3T3 XXXXXXXX 5XX



XXSigmaXXXXXXXXX(cat# C7661)
SDS-PAGE XXXXXX
A: Sigma BXXGlpbio

Caution: Product has not been fully validated for medical applications. For research use only.
Tel: (909) 407-4943 Fax: (626) 353-8530 E-mail: tech@glpbio.com
Address: 10292 Central Ave. #205, Montclair, CA, USA