

## Certificate of Analysis

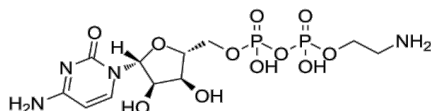
---

Product Name: Cytidine 5'-diphosphoethanolamine  
Cat. No.: GC68931  
Batch No.: 1  
Chemical Name:

### PHYSICAL AND CHEMICAL PROPERTIES

Cas. No.: 3036-18-8  
Molecular Formula: C<sub>11</sub>H<sub>20</sub>N<sub>4</sub>O<sub>11</sub>P<sub>2</sub>  
Molecular Weight: 446.24  
Storage: Store at -20°C

Chemical Structure:



### ANALYTICAL DATA

Appearance: A solid  
Purity: >98.50%  
Conclusion: The product has been tested and complies with the given specifications.

**Caution: Product has not been fully validated for medical applications. For research use only.**

Tel: (909) 407-4943 Fax: (626) 353-8530 E-mail: tech@glpbio.com

Address: 10292 Central Ave. #205, Montclair, CA, USA